



REIMAGINING

**REPORT TO
THE COMMUNITY
2021**

Jewish Museum Of Maryland
at the Herbert Bearman Campus
JEWISHMUSEUMMD.ORG



We connect people to Jewish experiences and Maryland's Jewish community to its roots. We inspire everyone to explore history, take action, and imagine a better future.

~~~~~  
Crazy quilt matzoh cover, made by Henrietta Heiman Jacobi, 1880s. Detail cover. *Gift of Phyllis Cahn Meyerhoff and Susan Adler Davis, JMM 2021.012.002*



Using scraps from her father's tailoring business, Henrietta Heiman Jacobi reimagined discarded pieces of silk and velvet into what would become a beautiful family heirloom. Her hand-quilted matzoh cover, passed down through five generations of mothers and daughters, was used for family Seders in Baltimore until 2010.

I cannot help but draw comparisons between this recent donation to the Jewish Museum of Maryland's collections and the **creative reimagining** that has taken place at the Museum this past year. We started the year on July 1, 2020, knowing that the pandemic would continue to shape our work. **Thanks to the support of our staff, board, members, and community**, we rolled up our sleeves and faced this new reality head-on. Guided by our **mission, vision, and values**, we reimagined the manner in which we do things in dramatic and long-lasting ways.

From celebrating the 175th anniversary of the Lloyd Street Synagogue to hosting our Winter Teachers Institute, we excelled at the "acceleration to digital," offering a broad range of virtual programs. The result: attendance at livestream programs far outpaced pre-pandemic physical attendance attracting a **worldwide audience** from 46 states and 9 countries!

**We found ways to bring our exhibits to the people.**

When people could not come to the physical museum, we offered virtual tours for individuals and groups. Reaching synagogues and organizations in Baltimore and beyond, we are concluding this year having provided over 50 customized virtual tours.

While we could not host students in person, we found ways to continue providing curricular resources and professional development opportunities to teachers – strengthening our credentials as a **community resource** for Holocaust education and combatting antisemitism.

Like the different fabrics, colors, and patterns in Henrietta Jacobi's matzoh cover, Maryland's Jewish community is equally diverse. As the community is divided by ongoing racial injustice and increasing mistrust, we **committed ourselves to diversity, equity, inclusion, and justice** by focusing on representing and amplifying the voices of all Maryland's Jewish community members.

Finally, just as the matzoh cover was passed from guardian to guardian, JMM transitioned leadership. We bid farewell to our esteemed Executive Director Marvin Pinkert and welcomed Sol Davis to the role. Sol brings so much passion, innovation, and creativity to the work. We look forward to the JMM's future under Sol's very capable leadership.

While FY21 will be remembered as a year filled with unprecedented challenges, I hope you, like me, appreciate JMM's ability to create opportunities from uncertainties. It has been a pleasure serving as president this past year, and I invite you to join us as we imagine the future of JMM together.

Sincerely,



**Nancy Kutler**  
*Board President*



# REFLECTING ON A YEAR OF CHANGE



# RECAP 2020-21 HIGHLIGHTS

This year JMM found creative ways to stay connected with our community. We seized opportunities to collaborate with friends and reach new people, locally and around the globe. Our calendar had something for everyone with new exhibits, the celebration of a momentous anniversary, a revamped website, and 92 unique digital programs!

### JULY 22, 2020

JMM partnered with B'nai Israel Congregation as part of the B'nai Israel Descendants' Day Series to present **Why History Matters: Especially the Difficult Parts**.

### AUGUST 9-27, 2020

Participants traveled from Australia to England to South Africa during JMM's **Museums Across the Seas Series**, celebrating the unique stories of Jewish communities from across the globe.

### SEPTEMBER 13, 2020

From science fiction to science fact, JMM explored the wonders of space with the launch of **Jews in Space: Members of the Tribe in Orbit** and accompanying virtual programs.



**Reaching the Stars.** Visitors enjoyed *Jews in Space: Members of the Tribe in Orbit – An Exhibition Created by the Center for Jewish History & the YIVO Institute for Jewish Research*.



### OCTOBER 1, 2020

JMM marked the **Lloyd Street Synagogue's 175th anniversary** with a night of sharing memories, stories, and statements from a host of characters connected to Maryland's oldest synagogue.

**REVEAL: New to the Collection.** This silver-plated, four-branched candelabrum came from Shomrei Mishmeres, the congregation whose home was the Lloyd Street Synagogue in the early-mid 20th century. *Gift of Rosalind Walman. JMM 2020.45.1*



### RETELLING FAMILY STORIES

The annual *My Family Story* project empowers students to explore their family histories and cultivate their Jewish identity. This year, JMM hosted a virtual celebration for 44 middle school students from Krieger Schechter Day School and Ohr Chadash Academy who created artwork that reflected their personal Jewish heritage journey. Explore this year's projects at [myfamilystoryjmm.tumblr.com](https://myfamilystoryjmm.tumblr.com)

*Created in partnership with Anu: The Museum of the Jewish People, My Family Story at the Jewish Museum of Maryland was generously supported by the Ronnie and Alli Russel Charitable Foundation.*

“I have grown up hearing stories from my parents and grandparents about where our families came from and how they got to America. The great thing about this project is that it gave us all an opportunity to do research, to identify these people and to learn about their stories through first-hand documents... Seeing the actual documents, looking at actual photos, and reading these actual stories made us all feel a new sense of connection with these relatives.”



Ava Perlin, 7th grade student who participated in the *My Family Story* project

Above: Ava's artwork *L'dor V'dor*, 2021.

## RECOLLECTING TOGETHER

In partnership with the Council of American Jewish Museums (CAJM), JMM is proud to participate in *Collecting These Times: American Jewish Experiences of the Pandemic*, an oral history initiative. JMM volunteers have conducted 30 interviews using *TheirStory* so far. To get involved in this project contact Maggie Hoffman at [mahoffman@jewishmuseummd.org](mailto:mahoffman@jewishmuseummd.org).

*This project is made possible with the generous support of the Chronicling Funder Collaborative.*



Lynn Witkin-Weinstein and Laurie Margolies interviewed their daughters, Lisa and Atara, who shared insight into their lives during the pandemic and their curiosities and concerns about life moving forward.

“As a psychologist, I routinely strive to understand the impact significant events have had on my clients. I was therefore very excited to be asked to conduct interviews for the oral history project... Although I knew the people I interviewed quite well, new aspects of their lives were shared during the interviews. Their stories of how they both struggled and thrived during the COVID pandemic were inspiring. Although future generations will be able to study the statistics related to the spread of the disease and the impact of vaccinations, these contemporaneous accounts of life during the pandemic capture meaningful details of real lives that would otherwise be lost to history.”



Lynn Witkin-Weinstein, JMM Volunteer

## NOVEMBER 22, 2020

The Jews of Color, Jewish Institutions, and Jewish Community in the Age of #BlackLivesMatter series, presented in partnership with Chizuk Amuno Congregation, invited community members to share, learn, and engage with the ethnic, racial, and cultural diversity of Jewish identity and experience.

“This program, like all the others in the series, presented an excellent speaker and much food for thought as well as motivation to become even more actively involved.”

*Public Program Participant, “Making Commitments: The Path Forward”*



You can explore more past events and watch recordings on our website at [JEWISHMUSEUMMD.ORG/ EXHIBITS-EVENTS/ PAST-EVENTS](https://www.jewishmuseummd.org/exhibits-events/past-events)



## DECEMBER 10-18, 2020

JMM, Center for Jewish Education, PJ Library, and the JCC of Greater Baltimore virtually celebrated each night of Hanukkah with families through stories, songs, and crafts as part of our **Hanukkah Story Series**.

### REVEAL: New to the Collection.

Inspired in part by JMM's lobby exhibit *Carved Expressions: Handwork of Rabbi Benjamin Szold*, one of the rabbi's great-grandsons donated this silver repousse bowl, made by the Baltimore Sterling (later Stieff) Silver Company. Baltimore Hebrew Congregation presented it to Rabbi Szold in honor of his 70th birthday in 1899. *Gift of Stanley Terrell. JMM 2021.20.1*



## JANUARY 24, 2021

From Jules Verne to Isaac Asimov to the contemporary local authors featured in **Writing Ourselves into the Narrative: Maryland Sci-Fi Writers**, JMM dedicated January to exploring science fiction literature.

## FEBRUARY 28, 2021

The Baltimore Jewish Council and JMM hosted the **Winter Teachers Institute 2021: Children and the Holocaust** sharing resources and practices that support the delivery of high quality Holocaust education.

“The speaker series was incredibly powerful. I have learned so much through their lived experiences and this has inspired me to continue learning more about Jewish history.”  
*Public Program Participant,  
“Connecting Stories of Survival”*

“Collaborations [with JMM] provide our Stevenson University students with new insights into Baltimore’s Jewish communities, past and present. Projects focused on the rich legacy of Jewish life in Baltimore allow our students to apply what they’ve learned in their design and communication courses while also engaging with a supportive client on meaningful work.”

*Amanda Hostalka  
Vice Provost for Outreach  
and Dean, School of Design  
Stevenson University*

**MARCH 10 & 14, 2021**

As part of the Baltimore Festival of Jewish Literature, JMM elevated the work of Maryland authors in **Ceiling Breakers and History Makers: The Legacy of Jewish Women and Justice** and **In Conversation with Joy Ladin**.

**MAY 20, 2021**

From the Museum reflecting upon how it has adapted over the last year to participants sharing their visions for the future, JMM's Annual Meeting focused on **Building the Participatory Museum**.

**JUNE 29, 2021**

JMM joined with arts and cultural organizations across Baltimore for a **Community Reading: Commemorating Juneteenth**, seeking to deepen our understanding of the historic event and its contemporary significance.

**APRIL 1, 2021**

In the spirit of communal care and collective mourning, JMM hosted a virtual opening for the outdoor exhibit **in the absence of proper mourning** by artist Tal Beery that created a public space for expressions of loss and grief.

**“Very interesting topic with a great moderator and three excellent, diverse panelists. The moderator asked very interesting questions and all three panelists were very articulate and illuminating.”**  
*Public Program Participant,*  
**“Faiths in Mourning”**

*in the absence of proper mourning* was a collaboration of LABA: A Laboratory for Jewish Culture and the Jewish Museum of Maryland, made possible with the generous support of CANVAS. The work is part of the national project – Dwelling in a Time of Plagues – which makes new art possible at outdoor sites.

**Remembrance.** In addition to activating the building's façade, *in the absence of a proper mourning* can be experienced online at [tinyurl.com/msv4p9x2](https://tinyurl.com/msv4p9x2)





## RELYING ON RELATIONSHIPS

Much of JMM's success is a result of our strong community relationships. FY21 reaffirmed our commitment to collaboration in every aspect of our work. We partnered with the Associated and its agencies to advance and inspire the Jewish community, we worked in tandem with our neighbors to strengthen the Jonestown community, and we connected with fellow museums to share meaningful stories. In the

years ahead, we look forward to building relationships with many more organizations.

**Below:** A popular fundraising project for sisterhoods and women's clubs in the mid-late 20th century, community cookbooks – like this one, produced by the Ladies Auxiliary of the Southeast Hebrew Congregation of Silver Spring, Maryland, in 1976 – are also wonderful repositories of community names, stories, and foodways. *Gift of Edith Creeger. JMM 2020.49.1*

“As a beneficiary agency of The Associated, the Jewish Museum of Maryland is our community’s storyteller. The Museum shares the story of Jewish Baltimore, enriches lives through education, and demonstrates that history, arts, and culture are critical to our community. It is our partnership and collaboration that enables The Associated to fulfill its mission of a vibrant Jewish life for all.”

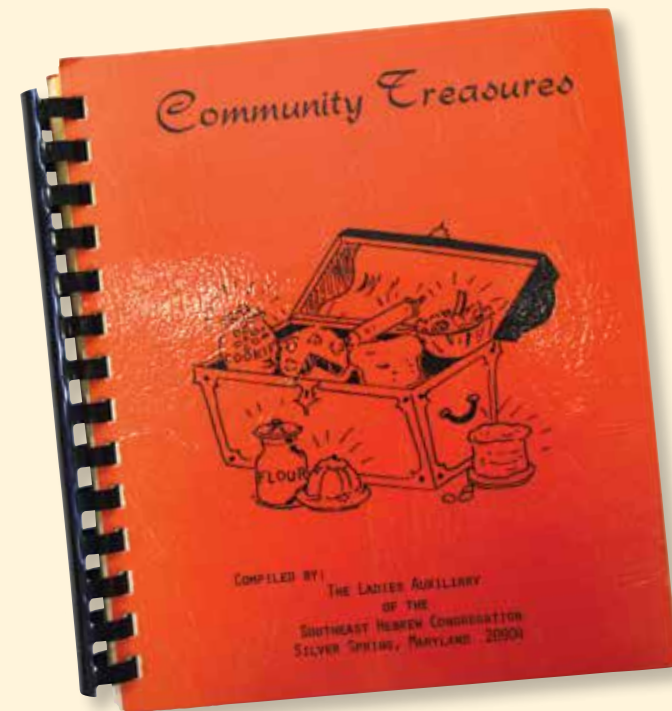


Marc B. Terrill, President, The Associated: Jewish Federation of Baltimore

“The Star-Spangled Banner Flag House is a proud partner of the Jewish Museum of Maryland, but our organizations share more than a partnership. As neighbors and stewards of historic 19th century Baltimore structures, our museums have a shared history that has fostered a deep-rooted friendship and commitment to serving our community through the history of Baltimore’s oldest neighborhood, Jonestown.”



Amanda Shores Davis, Executive Director, Star-Spangled Banner Flag House



# REVIEW FY 2020

## STATEMENT OF FINANCIAL POSITION Year Ending June 30, 2020

### NET ASSETS & LIABILITIES

#### Assets

|                                     |              |
|-------------------------------------|--------------|
| Cash                                | \$ 1,028,436 |
| Investments                         | 5,709,172    |
| Other Investments                   | 5,187        |
| Accounts Receivable                 | 2,213        |
| Contributions and Grants Receivable | 106,882      |
| Museum Shop Inventory               | 53,240       |
| Deposit                             | 28,178       |
| Property & Equipment                | 1,399,446    |
| Property Leased to Others           | 1,363,127    |

---

TOTAL ASSETS \$ 9,695,881

#### Liabilities and Net Assets

|                                       |         |
|---------------------------------------|---------|
| Accounts Payable and Accrued Expenses | 120,735 |
| Due to The ASSOCIATED                 | 16,597  |
| Notes Payable                         | 3,345   |
| SBA Loan                              | 162,692 |

---

TOTAL LIABILITIES \$ 303,369

#### Change in Net Assets

|                                                                    |           |
|--------------------------------------------------------------------|-----------|
| Operating Results (including depreciation)                         | (428,791) |
| Loss/Gain in Value Board Designated                                | (51,234)  |
| Gifts/Grants: Donor Restricted Assets<br>(Capital & Project-based) | 82,389    |
| Investment Gain (Unrestricted)                                     | 37,848    |
| Investment Gain (with Donor Restriction)                           | 154,258   |

---

TOTAL CHANGE IN NET ASSETS \$ (205,530)

TOTAL NET ASSETS 6/30/2020 \$ 9,392,512

### OPERATING RESULTS FY2020

#### Revenue

|                                                                |            |
|----------------------------------------------------------------|------------|
| Associated Allocation                                          | \$ 431,033 |
| Membership Dues                                                | 62,282     |
| Draw on Investment Income                                      | 335,083    |
| Gifts & Grants –<br>Unrestricted and released from restriction | 853,047    |
| Earned Income & Other                                          | 126,593    |

---

TOTAL REVENUE \$ 1,808,038

#### Expenses

|                                     |         |
|-------------------------------------|---------|
| Public Interpretation & Exhibitions | 792,951 |
| Education & Community Services      | 582,090 |
| Collections, Sites & Research       | 183,144 |
| Fundraising                         | 209,847 |
| Administration                      | 159,389 |
| Museum Shop                         | 60,138  |

---

TOTAL EXPENSES \$ 1,987,559

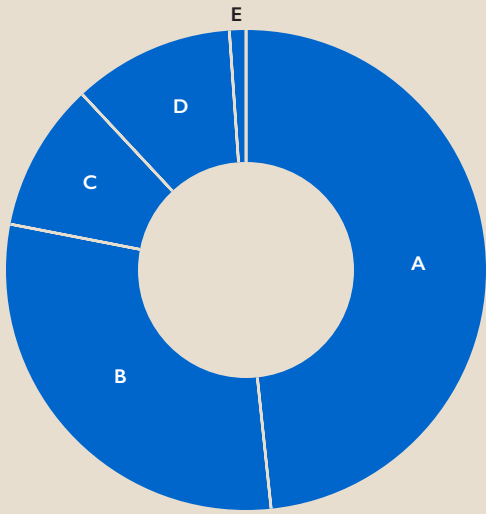
### OPERATING RESULTS

**BEFORE DEPRECIATION \$ (179,521)**

Depreciation (buildings & equipment) \$ (249,270)

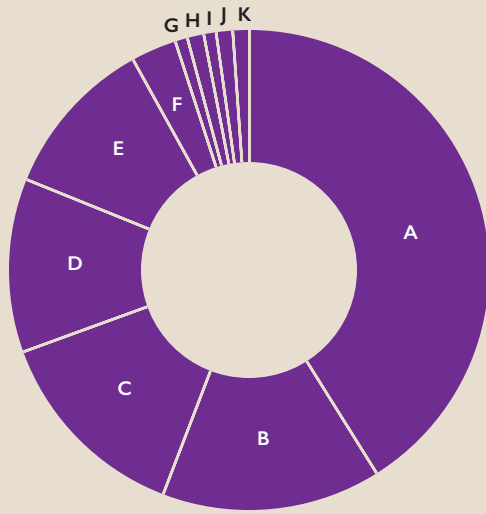
**Results including depreciation \$ (428,791)**





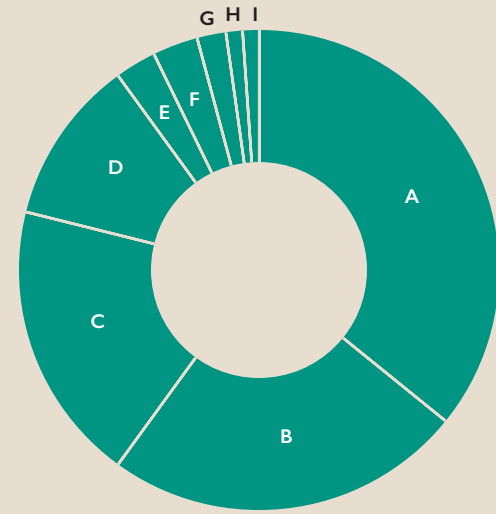
**EXPENSE BY TYPE**

- A 49% Salaries and Benefits
- B 30% Programs
- C 10% Physical Plant
- D 11% Administrative
- E 1% Development



**EXPENSE BY DEPARTMENT**

- A 42% Exhibits
- B 15% Education
- C 14% Visitor Services
- D 12% Programs
- E 11% Collections
- F 3% Store
- G >1% Marketing
- H >1% Physical Plant
- I >1% Development
- J >1% Administrative
- K >1% Other



**REVENUE BY TYPE**

- A 36% Private Gifts and Grants
- B 24% The ASSOCIATED Allocation
- C 19% Endowment Draw for Operations
- D 11% Government Grants
- E 3% Membership
- F 3% Rental Property Income
- G 2% Museum Shop
- H 1% Program and Admission Fees
- I 1% Other Income

# RESPECT 2020-21 CONTRIBUTORS

## \$20,000+

The Associated: Jewish Federation of Baltimore  
Anonymous (I)  
Cohen Opportunity Fund  
The Gottesman Fund  
Sandra and Thomas Hess  
The Joseph & Harvey Meyerhoff Family Charitable Funds  
Kutler Family Philanthropic Fund  
The Louis B., II and Josephine L. Kohn Family Foundation  
Maryland Department of Housing and Community Development  
PNC Greater Maryland

## \$10,000-19,999

Baltimore National Heritage Area  
Charles Crane Family Foundation  
Greif Family Fund, Carol Sandler  
The Hackerman Foundation  
The Herbert Bearman Foundation  
Iris Philanthropic Fund  
The Jacob and Hilda Blaustein Fund for The Enrichment of Jewish Education  
Maryland Department of Commerce  
Maryland Historical Trust  
Zimmerman Fund For Children

## \$5,000-9,999

Carol and Robert Keehn Family Philanthropic Fund  
Council of American Jewish Museums  
The Educational Alliance Inc.  
The Eliasberg Family Foundation, Inc.  
Arnold and Joyce Fruman  
Saralynn and Sheldon Glass  
Israel & Mollie Myers Foundation, Inc.  
Barbara P. Katz  
Louis and Frances B. Boone Memorial Foundation  
Gerald and Judith Macks  
Ira and Michelle Malis  
Nelson & Sara Fishman Family Foundation  
Morris W. Offit  
Judith Pachino  
Michael and Eleanor Pinkert  
Ronnie and Alli Russel Charitable Foundation  
Rothschild Foundation  
Harriet Stulman  
Leonard and Lindley Weinberg  
Duke and Phyllis Zimmerman

## \$1,000-\$4,999

Anonymous (I)  
Matthew Altman  
Herta and Arthur Baitch  
Becker & Frondorf  
Larry and Debbie Caplan  
Carole Sibel Outstanding Fundraising Achievement Award Fund  
Dr. and Mrs. Neri Cohen  
Dr. Howard and Maureen Davidov  
Mark and Debbie Davis  
Richard and Rosalee Davison  
Alan and Sharon Dorenfeld  
Dr. Howard Fields  
Robert K. Gehman  
Roberta and Ira Greenstein  
Louise Goldberg  
Beth Goldsmith  
Toby Gordon and Bruce Kaup  
GWWO Architects  
Lola and Joseph Hahn  
Hecht-Levi Foundation  
Bonnie and Howard Henson  
Bruce and Caren Hoffberger  
J G and A S Zimmerman Foundation  
James and Emelie Schwab Family Philanthropic Fund  
Joan G. and Joseph Klein, Jr. Foundation  
Dr. Murray and Michele Kalish  
The Kaplan-Kronsberg Family Charitable Fund

CONTINUED »



**Top:** Helen B. Aiken (1927-2014), fundraising for Israel Bonds at Chizuk Amuno, 1977. Helen was the daughter of Bessie Fruman Ballasohn (1904-1980) and granddaughter of Ida Siegelman Fruman. *Gift of Rudy Stoler, JMM 2015.019.020*

**Bottom:** Helen's mother Bessie Fruman, with her mother Ida Siegelman Fruman (1874-1945) and siblings Sophie, Fannie, Helen, Mary, and Charlie, in Russia "after the trek across Siberia," in 1917. They were on their way to join their husband/father Gilbert Fruman, and at least one daughter, who had already emigrated to Baltimore. *Gift of Helen B. Aiken, JMM 1988.034.002*



## MAPPING MIGRATIONS

Every family, whether biological or chosen, has a unique story. A family's lineage is a journey – not only across time, but often across geography as well.

This coming year, we will invite everyone who lives in Maryland and identifies as Jewish to contribute to *Mapping Migrations*, a community project showcasing historic and contemporary photos that represent those family journeys through time and space.

Our goal is to broaden not only our own collections, but also the perspectives of our audience: there is no one way to be a Jewish Marylander, and we want to celebrate and share all those many different paths.

**JMM is excited to begin this collecting journey and we need your support to make it happen. To become a sponsor or for more information, contact Tracey Dorfmann at [tdorfmann@jewishmuseummd.org](mailto:tdorfmann@jewishmuseummd.org).**

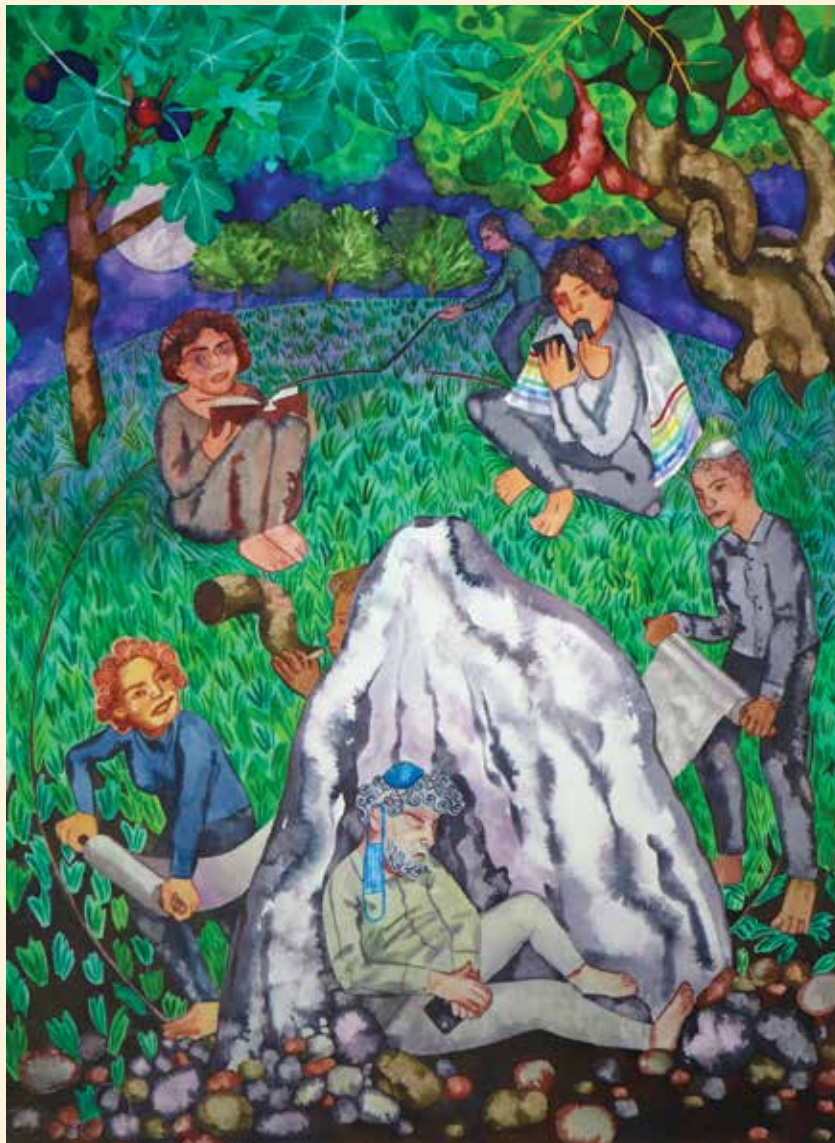


## ANCESTRAL DREAMING

What are your hopes for the future of the Maryland's Jewish community? What world do you imagine for your descendants?

1920-21 was a transformative year for the Jews of Maryland, with the founding of The Associated and numerous other organizations and institutions. Taking that anniversary and turning it toward the future, JMM will invite Jewish people across Maryland to share their dreams for the Jewish people and Jewish community 100 years from now. By preserving those dreams in our *Ancestral Dreaming* archive, JMM will help ensure that the Jewish community of 2121 will truly know what their ancestors dreamed for them, as well as aiding the community of today in making those dreams a reality.

**Join us in dreaming about the future. Support JMM in making this project a reality. To become a sponsor, contact Tracey Dorfmann at [tdorfmann@jewishmuseummd.org](mailto:tdorfmann@jewishmuseummd.org).**



This painting by Liora Ostroff was created in response to survey questions from members of the community about their hopes for the future. *Honi Fell Asleep Today, Ink on paper, 2021.*

Klein Sandler Family Fund  
 Barbara Kornblatt  
 Iris Krasnow and Chuck Anthony  
 Abram J. Kronsberg and  
 Robin Kaplan  
 Lapidus Cohen Foundation Inc.  
 Zachary P. Levine  
 Suzanne Levin-Lapides  
 David and Suzy Liebman  
 Lowell and Harriet Glazer  
 Family Philanthropic Fund  
 Robert and Vivian Manekin  
 Melvin & Betty Fine Foundation  
 Moser Family Philanthropic Fund  
 Paul and Emily Singer Foundation  
 Ilene and Elliot Merenbloom  
 Ira and Leslie Papel  
 Robert and Gerry Hodes  
 Family Fund  
 Stuart and Nina Rosenzweig  
 Laura and Mark Salganik  
 Scherr Family Fund  
 Ruth and David Simon  
 Robert and Eva Slatkin  
 John Sondheim and Emily Greenberg  
 Claire Tesh and Daniel Stoltz  
 Tobey, Julie and Lucy Roland  
 Philanthropic Fund  
 Angela Wells-Sims and Brian Sims  
 William and Mildred Kaplan  
 Charitable Foundation



## **\$500-\$999**

Annette and Michael Saxon Fund  
Constance Caplan  
Thora Colot  
Avi Dector  
Tracie and David Guy-Decker  
Barbara Himmelrich  
Daniel Hirschhorn  
Rebecca Hoffberger  
Erika and Jonathan Hornstein  
Wendy Jachman and Jeffrey Scherr  
Betsey R. Kahn  
Larry and Evelyn Kamanitz  
Charitable Fund  
Lois Rosenfeld Caring Fund at  
Baltimore Hebrew Congregation  
Anita Kassof and Josh Neiman  
Anna Pinkert  
Carla Rosenthal and Alan Schwartz  
Hon. Rochelle (Rikki) Spector  
Sylvia Tulkoff  
Robin Wiener

JMM is grateful to all our members who support the exciting programs and exhibits we bring to the community. A special thanks to our **1845 Society** and **Lloyd Street League Members** for their support in FY21.

## **ENDOWMENTS**

L. and S. Bendann Documentation Endowment  
Louis and Henrietta Blaustein Museum Endowment  
Louis and Frances B. Boone Research Endowment  
Checket Family Website Endowment  
Florence Cohen Beautification Endowment  
Collections Conservation Fund  
Doris and Benjamin Fishman Publication, Exhibition, and Education Endowment  
Isaac and Catharine Hecht Acquisition Endowment  
Hoffberger Family Exhibition Endowment  
Israelson Newsletter Endowment  
Betsey and Philip Kahn Publications Endowment  
Katz Family Library and Research Endowment  
Zanvyl and Isabelle Krieger Museum Endowment  
Anita and Mickey Steinberg Internship Endowment  
Edith Rothschild Weinberg Family Museum Endowment  
Harry and Jeanette Weinberg Foundation  
Jewish Museum Fund  
Robert L. Weinberg Family History Endowment  
Ellen Kahan Zager Accession Endowment

## **ASSOCIATED ENDOWMENTS FOR THE BENEFIT OF JMM**

Joseph and Minna Feldman Lecture Endowment  
(Sadie B. Feldman and Rossetta A. G. Glashofer)  
Sheldon & Saralynn Glass Education Endowment Fund  
Sigmund Stanley Hartz Endowment Fund  
Benedict and Babette Rosenberg Endowment Fund

“It was a pleasure to work with the Jewish Museum of Maryland during the 2019-20 cohort of the Keshet LGBTQ Leadership Project. As their coach, we discussed their plan to increase community programs and exhibits showcasing LGBTQ+ voices, shifting museum facilities to be more accommodating of all genders, and hosting DEI training opportunities for museum staff and board members. They are on their way to building a truly inclusive museum community!”

**Emily Saltzman**

*Associate Director of Learning and Training  
Keshet*

# REPRESENTING JEWISH MARYLAND

## FY21 DONATIONS TO THE COLLECTIONS

Thanks to the generosity and trust of our community, JMM is able to add meaningful materials to our collections every year. From photographs to everyday objects, documents to oral histories, these materials are incredibly powerful tools in telling the stories of Jewish life in Maryland from past to present.

After Baltimore Hebrew Congregation members participated in voter appreciation events at the polls in November 2020, Rabbi Elissa Sachs-Kohen said, “[They] didn’t bring signs with them in favor of one candidate or another. Instead, they brought signs that read ‘Baltimore Hebrew Congregation Thanks You for Voting.’ Even more importantly, in coordination with

Baltimore Votes, a non-partisan election participation organization, they brought food, folding chairs to offer voters in line, and Bluetooth speakers. All of these have been shown to add a spark of joy to fulfilling one’s civic duty and to encourage people who might not have been planning to vote to come do so.” *Gift of Baltimore Hebrew Congregation. JMM 2021.4.1*



Digital photo of Marisa Shultz and her fiancé Matt LaRoche volunteering with the Baltimore Hebrew Congregation’s polling place crew, in partnership with Baltimore Votes, at Cross Country Elementary School, Election Day 2020. *Gift of Marisa Shultz. JMM CP2021.2.1*



This table-top meat grinder was used by several generations of the Goldberg-Hahn-Kahl family in New York, Ohio, and Maryland. One of the daughters of Joyce Hahn Kahl (1924-2019) recalled, "I remember my mother using this meat grinder at home when I grew up. She would screw it on the kitchen table top or counter top, to grind leftover roast beef and potatoes. The mixture then would be baked in the oven and served for a hash dinner (with ketchup!)." *Gift of the family of Joyce Hahn Kahl and Elsa Goldberg Hahn Reisman. JMM 2020.37.1*



This stuffed Snoopy toy became the official holder of teenaged Patti Neumann's swimming club ribbons. These two photos show the eighteen ribbons he's holding, awarded at various Suburban Club swimming championships, 1971-1979. *Gift of Patti R. Neumann. 2020.43.6*



2405 Linden Avenue, Baltimore, was the home of Joseph A. Bank and his family around 1930. During recent renovations of the building, which has been home to the St. Francis Neighborhood Center for many years, these surviving mezuzot were found still attached to the doorframes of three upstairs bedrooms, as shown in the image on the right. *Gift of St. Francis Neighborhood Center. JMM 2021.3.1-3*



# RECOGNIZE JMM TEAM

## JMM FY21 BOARD

### Officers

Nancy Kutler  
*President*

Jeffrey Scherr  
*Vice President*

Roberta Greenstein  
*Vice President*

Len Weinberg  
*Vice President*

Gerald (Jerry) Macks  
*Treasurer*

Lola Hahn  
*Secretary*

Robert Keehn, M.D.  
*Immediate Past President*

### Trustees

Sheldon Bearman, M.D.

Erica Breslau

Neri Cohen, M.D., Ph.D.

Alan Dorenfeld

Robert Gehman

Saralynn Glass

Toby Gordon

Bonnie Heneson

Erika Rief Hornstein

Anita Kassof

Iris Krasnow

Abram Kronsberg

Suzanne Levin-Lapides

Ira Malis

Robert Manekin

Judy Pachino

Stuart Rosenzweg

Robert Slatkin

Hon. Rochelle (Rikki) Spector

Claire Tesh

Angela Wells-Sims

### Past Presidents

Ira Askin <sup>z"l</sup>

Miriam Lowenberg Black

Louis F. Cahn <sup>z"l</sup>

Larry Caplan, Esquire

Moses J. Cohen <sup>z"l</sup>

Rabbi Israel M. Goldman <sup>z"l</sup>

E.B. Hirsh <sup>z"l</sup>

Barbara Katz

Robert Keehn

Judith M. Langenthal

Richard S. Lehmann, Esquire

Jack Levin <sup>z"l</sup>

David B. Liebman, D.P.A.

Ira Papel, M.D.

Mark D. Neumann

Morton S. Oppenheimer <sup>z"l</sup>

James A. Rothschild, Esquire

Edward B. Sandler <sup>z"l</sup>

Brig. Gen. Philip Sherman <sup>z"l</sup>

Samuel S. Strouse <sup>z"l</sup>

Joseph Wiesenfeld <sup>z"l</sup>

Duke Zimmerman

## JMM FY21 STAFF

Sol Davis, Ph.D.

*Executive Director*

Marvin Pinkert

*Executive Director*

Tracie Guy-Decker

*Deputy Director*

Trillion Attwood

*Director of Programs and*

*Visitor Experience*

Joanna Church

*Director of Collections and Exhibits*

Ilene Dackman-Alon

*Director of Education*

Wendy Davis

*Volunteer Coordinator*

Tracey E. Dorfmann

*Director of Development*

Sue Foard

*Administrative Specialist*

Laura Grant

*Program Assistant*

Ayana Z. Harris

*Administrative Assistant*

Rachel Kassman

*Development and Marketing Manager*

Talia Makowsky  
Visitor Services Coordinator

Maggie Hoffman  
Archivist

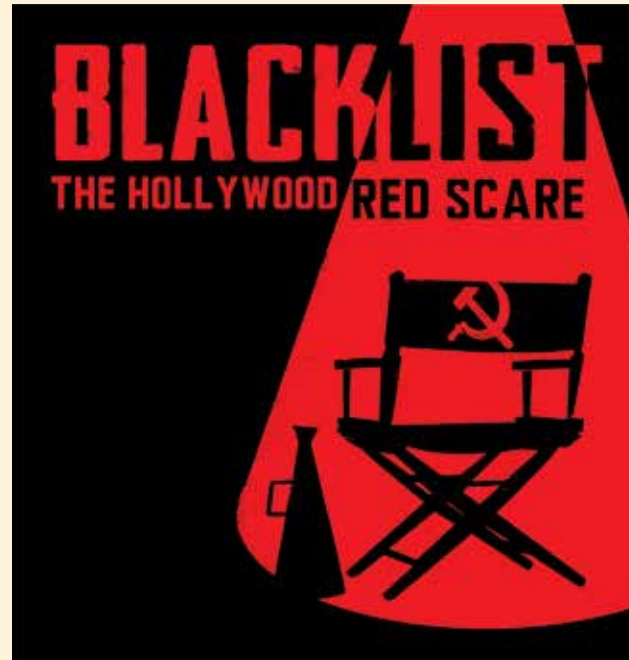
Marisa Shultz  
School Program Coordinator

Christopher Sniezek  
Manager, Esther's Place

Paige Woodhouse  
Project Manager

Allene Gutin  
Alex Malishostak  
Museum Educators

CONTINUED »



## BLACKLIST: THE HOLLYWOOD RED SCARE

An original exhibit created by  
and on loan from Jewish Museum Milwaukee  
Opening March 20, 2022

*Blacklist: The Hollywood Red Scare* explores the intersection of politics, art, economics, and social dynamics that impacted our First Amendment rights of speech, religion, and assembly during Hollywood's "Red Scare." Through personal narratives of those who were blacklisted, members of the House Un-American Activities Committee, and film executives of the period, *Blacklist* examines the shifting definition of what it meant and means to be a patriotic American.

The histories told in *Blacklist* take on new relevance in the context of contemporary events. As free speech, journalism, and freedom of assembly resurface as rights in need of protection, *Blacklist* provides a look back at an era in which art, artistic expression, and speech were threatened.

Please help us bring this exhibit to Baltimore.  
To become a sponsor or for more information,  
contact Tracey Dorfmann at  
[tdorfmann@jewishmuseummd.org](mailto:tdorfmann@jewishmuseummd.org).

**Bottom:** Rally for the Hollywood Ten, featuring the Ten and their families, 1950. *Courtesy of the Wisconsin Center for Film and Theater Research.*



**VOLUNTEERS**

- Kathy Abbott
- Dr. Michael Andorsky
- Fran Banks
- Margarita (Meg) Berman
- Robbin Bord
- Bob Brooks
- Carol Buckman <sup>z"l</sup>
- Marty Buckman
- Maxine Cohen
- Ted Cornblatt
- Dr. Howard Davidov
- Maureen Davidov
- Bob Davis
- Wendy Davis
- Simone Ellin
- Lois Fekete
- Laraine Fisher
- Stephany Gilbert
- Saralynn Glass
- Helene Goldberg
- Maxine Gordon
- Roberta Greenstein
- Lola Hahn
- Robyn Hughes
- Rachel Jablon
- Joyce Jandorf
- Harvey Karch
- Robert Keehn, M.D.
- Vera Kestenber
- Abram Kronsberg
- Nancy Kutler
- Sharan Kushner

- Dr. Bruce Lebowitz
- Gayle Leibowitz
- Sarah Levitas
- Laurie Margolies
- Shelly Mintz
- Sylvia Nudler <sup>z"l</sup>
- Rita Plaut
- Jill Rosenbaum
- Travis Rother
- Karen Rubin
- Steven Rubin
- Phil Sagal
- David C. Scher
- Marvin Spector
- Ellen Stein
- Judith Tapiero
- Harold Toppall
- Helene Waranch
- Ray Weinstein
- Lynn Witkin-Weinstein

**INTERN**

- Rafael Wirtschafter

**COMMITTEES**

- Edie Creeger
- Rochelle Eisenberg
- Barbara Franco
- Michelle Gordon
- Andrew Harrison
- Susan Katz
- Larry Rosenberg
- Michael Saxon

- David C. Scher
- Octavia Shulman
- Mark Smolarz
- John Sondheim
- Dwight Warren
- Lynn Witkin-Weinstein

**CONSULTANTS**

- AlphaGraphics
- Kimberly Ballero, HERO Center
- Eli Bass, Center for Jewish Education
- Becker & Frondorf
- Tal Beery
- Changing Media
- Christina Chavarria, USHMM
- Dellon Design
- Jessica Fink, Center for Jewish Education
- Dr. Lauren Granite, CENTROPA
- Jennifer Goss, Echoes & Reflections
- GWWO Architects
- Dr. Miriam Kassenoff, Teacher's institute on Holocaust Studies at University of Miami School of Education
- Dr. Ellen J. Kennedy, World Without Genocide
- Will Kirk
- Paul Kutner
- David London
- Katherine Lyons
- Danielle Nekimken
- Natalie Pilcher
- P+M Exhibits

- Dr. Dan Prinzing, Wassmuth Center for Human Rights
- Colleen Simon, USHMM Teacher Fellow
- Marta Usiekiewicz, Forum for Dialogue



**REVEAL: New to the Collection.** Bronzed baby shoes for Paul Kramer (born 1936, **shoes top**) and Janet Amitin (born 1938, **shoes bottom**), both of Baltimore. Paul and Janet were married in 1957. *Gift of Paul and Janet Kramer. JMM 2021.5.1-2*

<sup>z"l</sup> of blessed memory

“The Jewish Museum of Maryland is an essential part of the visitor experience in Baltimore. Through the preservation of poignant personal stories, the museum enhances the city’s history, arts and culture landscape, consistently curating exhibitions that educate the community and visitors alike on the Jewish experience in Maryland.”

Al Hutchinson  
President and CEO  
Visit Baltimore

Your generous support of JMM helps grow and sustains us. Your contribution allows us to create programs, expand our collection, increase accessibility, and better represent the rich diversity of Maryland’s Jewish community. Your endorsement and sponsorship ensures our ability to foster learning and dialogue across our vibrant community.

#### **BECOME A MEMBER**

Membership is a wonderful way to become involved with and support JMM. Join our community of members today.

#### **VOLUNTEER**

We rely on our dedicated staff of enthusiastic, friendly, and hard-working volunteers to support the Museum mission and programming.

#### **ANNUAL GIVING**

Annual contributions are vital to sustain our mission of interpreting the Jewish American experience for diverse audiences, fostering cross-cultural understanding, and promoting public discourse about issues in Jewish and American life. Tribute donations are a wonderful way to remember special occasions and events, celebrate a birthday, or honor someone’s memory.

#### **CORPORATE GIVING**

Corporate sponsors and patrons receive broad recognition and benefits for employees and their families.

#### **CREATE A LEGACY**

Remember JMM in your estate plans through a direct bequest or another planned financial vehicle arranged during your lifetime.

#### **CONTRIBUTE TODAY!**

For more information about how to make a one-time donation, recurring gift, or a planned future gift contact **Tracey Dorfmann** 443.873.5165 or [tdorfmann@jewishmuseummd.org](mailto:tdorfmann@jewishmuseummd.org)

REINVEST  
SUPPORT JMM

# A TIME OF RE/TURNING

I am thrilled to take a leadership position at the Jewish Museum of Maryland at this time, a time of rupture and renewal sown with the seeds of transformative possibilities. A year ago, the operative prefix was “anti,” asserting opposition: words including antidemocratic, antifascist, anti-Blackness, and antisemitism reflected a world of divisiveness and antagonisms. Now, through pandemic, upheaval, and uprising, the prefix “re”: meaning “back” and “again” is in the air.

Considering our reentry into the physical space of the Museum is a process of returning, one that is full of potential for reinvention. We are moving through this process from a position that is reflective about our past with a commitment to evolve our work in the future. Rather than reflexively snap back into ways of doing the work that mirror the pre-pandemic era, we are working with the belief that we must continuously strive to regenerate, renew, and reconsider.

**Reentry:** As we prepare to invite the public back into the museum buildings, how can we improve accessibility and inclusivity so that the museum is open, welcoming, and embracing of all? How can we reenter in a way that continues to prioritize the care of our staff and community?

**Reimagine:** Let’s reimagine the ways we use the museum spaces – including the new ways we will inhabit digital spaces – deploy our growing digital archive of powerful programs and build deep and enduring relations with our neighbors in Jonestown.

**Remember:** Let’s remember the best of our past and draw strength, courage and inspiration from those who came before us as we imagine and build a more just, equitable, abundant, and peaceful future.

**Retell:** The Jewish Museum is our communal storyteller, and storytelling is what connects us with each other and our past. The stories of the Jewish people must continuously be told and retold, bringing in new voices and diverse perspectives.

**Reset:** This is a reset moment. Moments like these are rare. The JMM enters into this time of reset and renewal with an expansive spirit, poised to deepen our work pursuing justice, and serving as a vital institution committed to nurturing the public commons in our community.

I look forward to advancing this work with all of you in the coming year.



**Sol Davis, Ph.D.**

*Executive Director*



“The Jewish Museum of Maryland is one of the premier regional Jewish museums in the US. With its strong collection, its notable historic sites, and its long track record of leadership – the JMM is a cornerstone of the field of Jewish museums.”

Melissa Martens Yaverbaum  
Executive Director  
Council of American Jewish Museums

~~~~~

Collected as part of JMM’s “History is Now” initiative, these eleven pieced-fabric flowers were designed and sewn by Rachel Kassman. Rachel said, “Over the course of the pandemic I dove into a new hobby – quilting. These handsewn, English paper piecing hexies represent quite a few things,” ranging from scraps leftover from favorite clothing and other sewing projects, to material used in an earlier project by her grandmother Shirley Kassman, who passed away in early 2021. *Gift of Rachel Kassman.*
JMM 2021.18.1a-k



REIMAGINING




REPORT TO THE COMMUNITY 2021

Non-Profit Org.
U.S. Postage
PAID
Baltimore, MD
Permit #8472

Jewish Museum of Maryland, Inc.

15 Lloyd Street
Baltimore, MD 21202
410-732-6400

JewishMuseumMd.org

 facebook.com/jewishmuseummd
 @jewishmuseummd
 @jmm_md

~~~~~  
**JMM is an agency of The Associated**



~~~~~  
Photos by Will Kirk, Tal Beery, and JMM Staff.