

UNEXPECTED DESTINATIONS

Report to the Community 2019

Jewish Museum of Maryland
at the Herbert Bearman Campus
JewishMuseumMD.org



PRESIDENT'S REPORT: WHERE WE'VE BEEN

How do you begin to unpack a year like FY '19? What a fantastic road we've traveled!

JMM's journey included some unusual destinations. We began the year by inviting visitors to explore Harry Houdini's youth (as Erich Weiss) in Budapest, Hungary and Appleton, WI. Within a few months we attempted to meet with Houdini in the "great beyond" during our Halloween séance. We encountered some of the Jews who escaped the Holocaust by way of Shanghai and a few who perished in Prague. Young people told us the story of the global origins of Baltimore's Jewish community with the *My Family Story* project and we learned something about our neighbors through the storytelling projects at Morrell Park and Graceland Park Elementary/Middle schools.

As surprising as these destinations were, the most exciting place we visited was the destination that JMM has become:

- **Our on-site attendance broke all records** for our Museum – surpassing 15,000. Ten out of twelve months were higher than the previous year, including four out of the five months after Houdini had moved on to Atlanta. School field trips grew by a dramatic 50%+.
- **We became much more visible.** In addition to stories in the *Jewish Times* and *JMore*, you may have heard our interviews on WYPR, WJZ, or Fox45, or noticed us in the *Sun* or the *Washington Post*. The Houdini exhibit also took us to national venues where we've rarely been – like *AAAWorld* and the *Jewish Daily Forward*.
- **We strengthened our partnerships in our Jonestown neighborhood.** We helped facilitate the merger of Historic Jonestown, Inc. and the Jonestown Planning Council, providing one strong voice for our community. We helped welcome the National Aquarium's Animal Care and Rescue Center and the new Ronald McDonald House Charities to Baltimore Street.
- **We expanded our collaborations** with museums and cultural institutions as well. We worked with Chesapeake Shakespeare Company, American Visionary Art Museum (AVAM), Morgan State University, and the Baltimore Museum of Art (BMA) on Baltimore's *Spring of Remembrance* and we were a key partner in *Stitching Maryland Together* with the Maryland Historical Society, Stevenson University, and PNC Bank.
- **We deepened and expanded our relationships in Jewish Baltimore**, partnering with our fellow-Associated-agency the Baltimore Jewish Council on several Holocaust projects, including the very moving program with the *Together We Remember* organization in the Lloyd Street Synagogue. We also laid the groundwork for a future partnership with Jewish Volunteer Connection and provided support for next year's Associated Centennial celebrations.

The only place more thrilling than where we've been is where we're going. I look forward to joining you on this next leg of our journey.

Robert Keel



In the press, Houdini truly was "inescapable" this summer. From the front page of the *Sun's* entertainment section to a cover story in the *Jewish Times*, everyone was talking about the magic at JMM.



JMM was thrilled to partner with Stevenson University for our *Fashion Statement* exhibit. Students from "The Mill," an interdisciplinary class, helped to create multiple elements of the exhibit, including identity icons and the two-dimensional dress-up board seen here.



This year's *Together We Remember* program, commemorating victims of violence, was as moving as ever, bringing folks from all parts of Baltimore's community together to not only remember those lost but to figure out what they can do to help build a better future.



Perhaps the most surprising visitors to JMM this year were this colorful pair of Chinese Lion Dancers. They joined us to celebrate both the Lunar New Year and the opening of *Jewish Refugees and Shanghai*.

HIGHLIGHTS FROM OUR JOURNEY

Fiscal year 2019 has been a whirlwind! With 65 unique public and members-only programs, along with five special gallery exhibits (plus three lobby displays), three living history characters, and more school field trips than you can shake a stick at, JMM has been busy from start to finish. Here are just a few of our favorites.



JULY 16, 2018 Harry Houdini Living History Performance

Actor, magician, and curator David London debuted JMM's newest living history character, Harry Houdini, to over 200 campers at Camp Koolanu. Throughout the year, over 4,200 people would "travel back in time" to hear Houdini tell his story.

The Houdini living history character was made possible, in part, by the generous funding of the Jacob & Hilda Blaustein Fund for the Enrichment of Jewish Education.



AUGUST 23, 2018 Operation Finale

In a movie theater filled to capacity, JMM partnered with the United States Holocaust Memorial Museum (USHMM) to present a special preview of the film *Operation Finale*, which dramatized the capture of Adolf Eichmann. The screening was followed by a talkback discussing the role of art in teaching history, facilitated by Deputy Director Tracie Guy-Decker.



SEPTEMBER 5, 2018 JMM Is Selected

On September 5, JMM announced our selection by Bloomberg Philanthropies to participate in a year-long Arts Innovation and Management program. The program included not only a generous grant for operating support, but expert training throughout the year to help build our capacity and strengthen JMM for all our future endeavors.



JANUARY 20, 2019 A Fantastical Farewell to Houdini

A packed house was held captivated by magician Brian Curry as JMM and our visitors bid a fantastical farewell to *Inescapable: The Life and Legacy of Harry Houdini*.



FEBRUARY 2, 2019 Exhibit Opening

Dragons...in the synagogue? The opening of *Jewish Refugees and Shanghai* was an affair to remember. Chinese dragon dancers led us from the historic Lloyd Street Synagogue into the galleries for a multi-lingual experience telling the little-known story of the Jewish people who sought sanctuary in Shanghai during World War II.



MARCH 14, 2019 My Family Story

The fifth annual presentation of *My Family Story* was a celebrated evening for all involved. Excited students shared their meaningful, moving projects with friends and family alike. And once again, one of JMM's winners was selected for the national exhibit in Israel!

My Family Story is supported by the Ronnie and Allie Russel Charitable Foundation.



OCTOBER 28, 2018 Magical Family Day

It was a full day of smiles and laughter at our Magical Family Day, marking the Halloween weekend with Houdini-related festivities. From magic shows to card-trick classes to top hats and wands, there was fun to be had for magicians and magic-lovers at any age!

The Houdini Family Day was made possible, in part by the generous funding of the Jacob & Hilda Blaustein Fund for the Enrichment of Jewish Education.



NOVEMBER 11, 2018 Veteran's Day: The Jewish Legion

JMM celebrated the anniversary of the end of World War I with a look at the Jewish Legion. Archivist Lorie Rombro created an exhibit using items from our collections and presented the stories behind them as part of our Veteran's Day observance.

This exhibit and program were made possible by a generous gift from The Carole and Hanan Sibel Family Foundation.



DECEMBER 2, 2018 The Great Jewish Bake Off!

Seventeen bakers presented their finest efforts for tasting at the *Great Jewish Bake Off*. While the grand prize was taken home by a chocolate babka, everything was delicious. From challahs to Mandelbrot to bagels, it was a dazzling display of baking talent.



APRIL 11, 2019 Connected Threads

JMM celebrated the opening of our dual exhibits *Fashion Statement* and *Stitching History from the Holocaust* with a special members-only reception. With live music, specialty wines, and a family portrait photo station, it was a wonderful evening.



MAY 19, 2019 Recovery & Renewal Kick-Off

JMM was proud to introduce a new program series, *Recovery & Renewal: The Immigration Experience*. The series is meant to encourage understanding and empathy, as well as inspire action in our visitors, connecting the lessons of the past with the experiences and challenges faced by immigrants today.

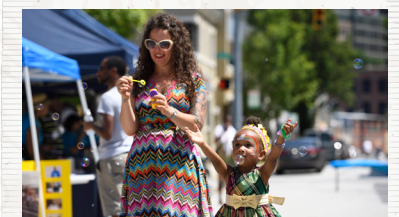
The Recovery & Renewal series is made possible through the generosity of the Lois Rosenfield Caring Fund of Baltimore Hebrew Congregation.



JUNE 23, 2019 Jonestown Festival: Hamilton Comes to Jonestown

The neighborhood came together to celebrate the 4th annual *Jonestown Festival*. This year we celebrated Jonestown's revolutionary roots with singing, hat-making, hula-hooping, and general merriment. We can't wait to do it again next year!

The 2019 Jonestown Festival was made possible, in part, by a generous placemaking grant through the Maryland Heritage Area Authority, managed by the Baltimore National Heritage Area.



TRAVEL STORIES

Personal Stories @ Graceland Park: PROJECTED



There was a lot of joy on the red carpet from these student filmmakers.

It was an opportunity to be heard. A moment to feel special. Walking down the red carpet at their film premiere was the culmination of a year-long journey that 7th graders at Graceland Park Elementary/Middle School traveled together.

Personal Stories @

Graceland Park: *PROJECTED*, a documentary film-making project in partnership with the JMM, transformed students into filmmakers, creating narratives based on their personal experiences.

Based on last year's successful partnership with Morrell Park Elementary/Middle, this year the *Personal Stories: PROJECTED* program expanded to two schools.

Combining a visit to JMM to explore the stories told at the Museum with the guidance of storyteller Scott Fuqua and filmmaker Amelia Voos, 27 Graceland Park students mined their own memories, interviewed their families and friends, and used their smartphones to tell their stories. Students learned that their stories – whether silly, poignant, heartfelt, or celebratory – were worth sharing.

For their teacher, Dr. Amy Rosenkranz, the project not only empowered her students, but **built empathy** among the class. She has seen that “students have been sharing with the school community and getting more involved with the school.”

Walking the red carpet at the JMM and debuting their films is not the end of their journey. This year, students told their own stories. Next year, as 8th graders, they will use their newly learned skills to tell the story of their school.

You can view a special thank you video created by Graceland Park students here:
<https://tinyurl.com/GracelandParkProjected>

Traveling with Grace

JMM makes a point to communicate in many ways, including online through email and social media – it's a great way to share material from our collections with a wide audience. We think of it as using the technology of the future to connect people to the stories of our past.



Grace Hecht on crutches while traveling in France, 1954. JMM 1985.154.2.10.

We are not shy about using hashtags, and we particularly love #TravelTuesday. This year we've been using #TravelTuesday to introduce everyone to Grace Amelia Hecht. Born in 1897 to Moses and Florence Hecht, Grace grew up around Eutaw Place and Druid Hill. We believe she was a victim of polio, which left her with some physical disabilities. Grace – and her family – also liked to travel.

We are lucky enough to have some of her travel diaries here in the JMM archives and in January 2019 we embarked on a multi-year project to transcribe and share her writing online. So far this year we've followed along on Grace's very first trip to New York City in 1919, a 1924 tour of the west coast, and most recently a 1929 visit to Italy, Switzerland, Austria, and Germany.

Seeing the world through someone else's eyes, reading their stories in their own words, helps us **connect on a deeper level**. Grace's descriptions, like the one below, make us feel like we are there with her.

Banff, Canada, 1924: "We left Lake Louise by auto this morning at nine o'clock, but not before I had one last, long, loving look at this, which I consider the most perfect picture I have yet beheld, for the sun was shining brightly, the air was clear as crystal and for the first time since I have been here there was not a vestige of mist on the mts. which stood out sharply, their snowy summits clearly defined against the blue sky, the poppies gleaming like gold against their rich green background and the sailing surface of the lake shining softly in its basin."
<https://tinyurl.com/TravelingWithGrace>

A Special Bat Mitzvah Guest



The Shapiro family with the proud bat mitzvah girl and Oscar and Hannah Meyerhoff with their grandchildren, c. 1940. JMM 2003.26.4.

Joanna Church, JMM's Director of Collections, isn't Jewish - but she loves bar & bat mitzvahs, and this spring found her with a surprise invitation. When the Shapiros reached out about their daughter Ayla's (then) upcoming celebration, they hoped to make a special connection.

Ayla's great-great-great grandfather, Oscar Meyerhoff (1864-1946), emigrated to Baltimore with his wife and six children in 1906. He was a grocer, schochet, and cantor. His tallit was handed down through family, worn by Oscar's great-great grandson David Shapiro when he became a bar mitzvah and making part of his chuppah when he married. David's mother Sheila donated the tallit to JMM in 2001.

The tallit itself is very fragile, which is common for a well-loved wool textile that's around 100 years old. When David called JMM to ask if it could be part of his daughter Ayla's bat mitzvah, everyone understood that the tallit could not be worn or handled, thanks to preservation concerns. But under the watchful eye of Joanna, the tallit was present at Ayla's bat mitzvah, displayed on the bima during the service.

While the tallit is packed away for now, **stored safely back in our collections**, we look forward to bringing it on a very special field trip in a few years, when it's time for Ayla's brother Ethan to have his own bar mitzvah!

Winter Teacher's Institute

Yulia Suslova, an ESOL teacher from Charles Carroll Barrister Elementary and Liliana Stelmach, an ESOL teacher at Armistead Gardens Elementary Middle School, both put high value on their Sundays. Nevertheless, this winter they decided to take a chance and participate in JMM's first *Winter Teacher's Institute*. On two consecutive Sundays in February Yulia and Liliana joined 34 fellow teachers to learn more about teaching the Holocaust and making connections between history and their students.

This journey, which was presented in partnership with the Baltimore Jewish Council, took them to the Embassy of the People's Republic of China and the USHMM. They also spent a day at JMM, where they made connections with the *Jewish Refugees and Shanghai* exhibit. For Yulia and Liliana, the most important part of the trip was how they could incorporate the things they saw, heard, and experienced back in their classrooms.

For Yulia, potential activities were abundant: “A lot of students in our school are refugees, either legal or illegal, so there are many connections between past and present that we can build on in order to **make learning meaningful and emphatic**.” Liliana was empowered by participating in the lectures and discussions, “I do believe that I can teach students to appreciate things they have, and how to be compassionate to others.”

Spending those two precious Sundays with JMM was definitely worth it – both Yulia and Liliana brought their own classes to the JMM on field trips to explore the Lloyd Street Synagogue and the exhibits.



Touring the Embassy of the People's Republic of China in Washington, DC.

STATEMENT OF FINANCIAL POSITION

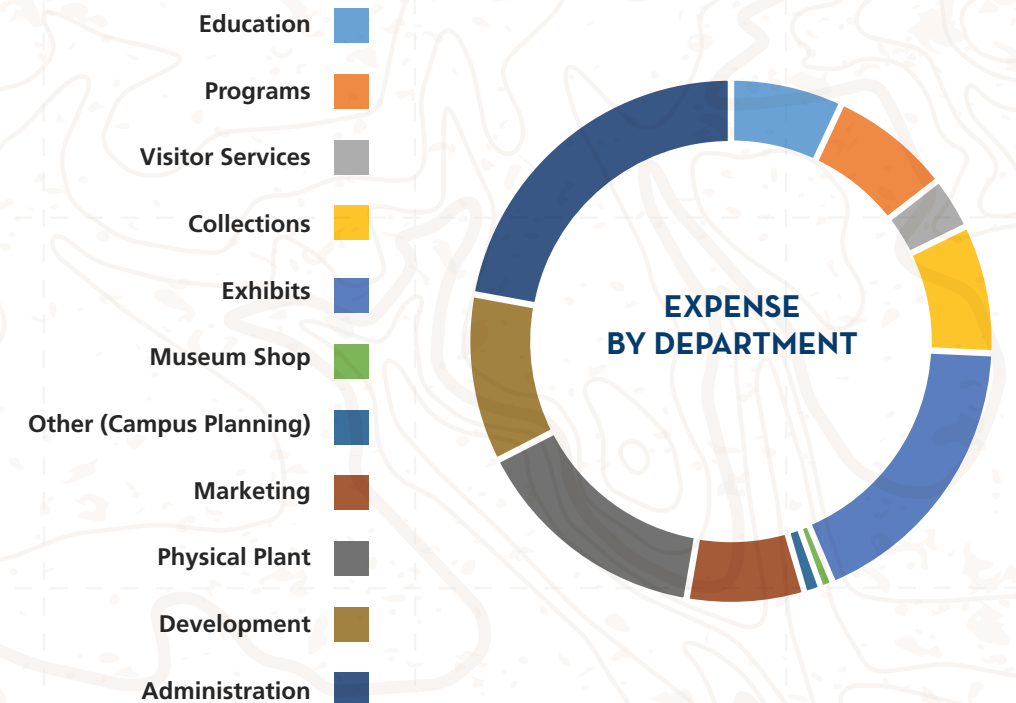
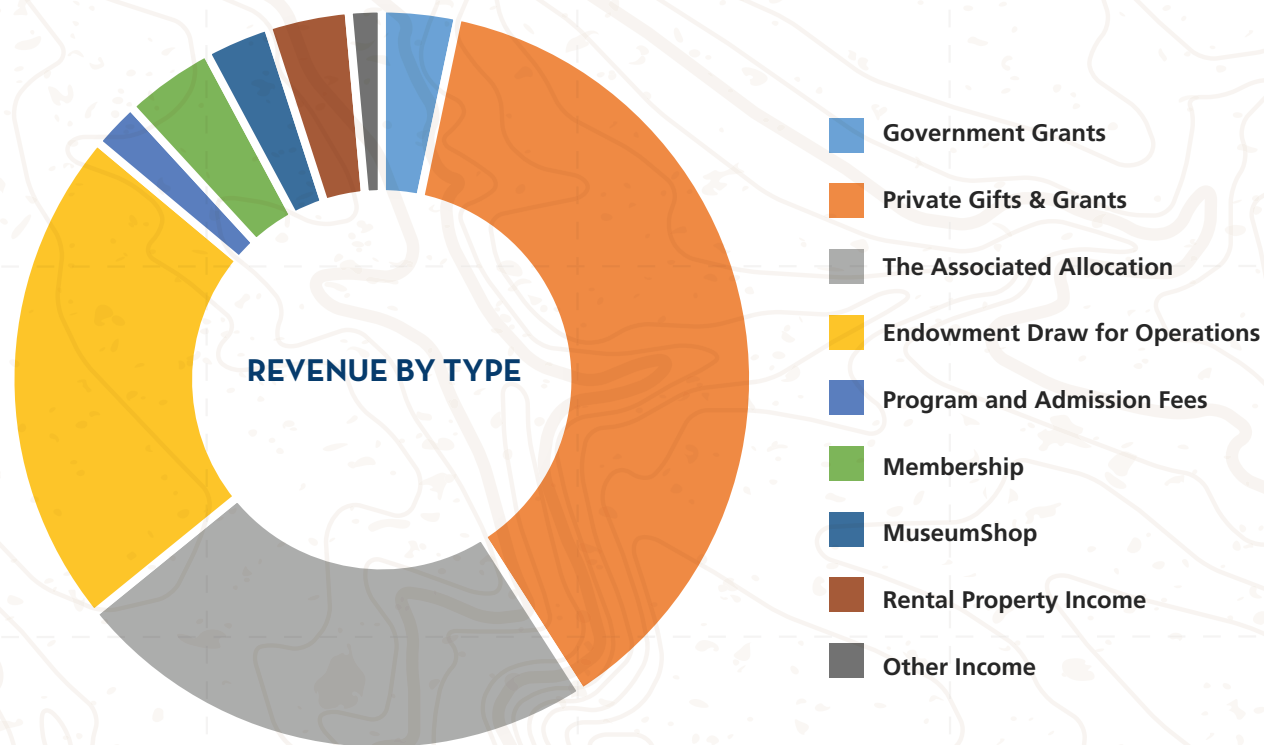
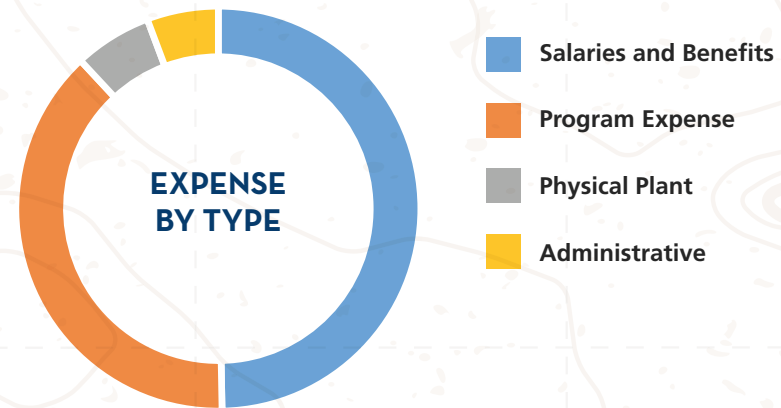
Year Ended June 30, 2018

Statement of Financial Activities

ASSETS	2018	Revenue	
Cash	284,985	Associated Allocation	408,023
Investments	6,101,674	Membership Dues	70,052
Other Investments	5,101	Draw on Investment Income	385,844
Accounts Receivable	6,506	Gifts & Grants - Unrestricted	498,254
Contributions and Grants Receivable	76,075	Earned Income & Other	396,053
Museum Shop Inventory	60,214		
Deposit	26,310	TOTAL REVENUE	1,758,226
Due from The Associated	14,179		
Property & Equipment	3,057,710		
	9,756,425		
Liabilities and Net Assets			
Accounts Payable and Accrued Expenses	143,912		
Notes Payable	10,307		
Deferred Revenue	425		
Net Assets	9,478,380		
	9,632,754		

Expenses	
Public Interpretation & Exhibitions	664,025
Education & Community Services	505,445
Collections, Sites & Research	236,108
Fundraising	177,694
Administration	120,938
Museum Shop	41,641
TOTAL EXPENSES	1,745,851

Operating Results Before Depreciation	
	(12,375)
Depreciation (buildings + equipment)	(257,777)
Results including depreciation	(245,402)
Investment Income	481,589
Change in Board Designated and Temporarily Restricted	(361,257)
CHANGE IN NET ASSETS	(125,070)



PACKING LIST

Thanks to the generosity of our members and friends, the JMM continually adds wonderful new materials to the artifact, archival, photograph, and reference collections. This year donors to the collection hailed from all over Maryland, including Baltimore, Pocomoke City, Woodstock, Annapolis, and Silver Spring, as well as locations further afield like Atlanta, GA, Provincetown, MA, Boyton Beach, FL, and Los Angeles, CA!



This handmade, wooden cat box was built by the artist Herman Maril to transport family pets back and forth between Baltimore and their summer residence in Massachusetts. Notably, this box was used to send the family cat Molly Midnight back to Baltimore from Provincetown after her unscheduled vacation (as told in *Runaway Molly Midnight*, a children's book written by Maril's daughter Nadja). Gift of The Herman Maril Foundation, JMM 2019.16.1.

To view a list of all new donors to the JMM collections in the past year, please visit our website at <https://tinyurl.com/JMMNewCollections>.



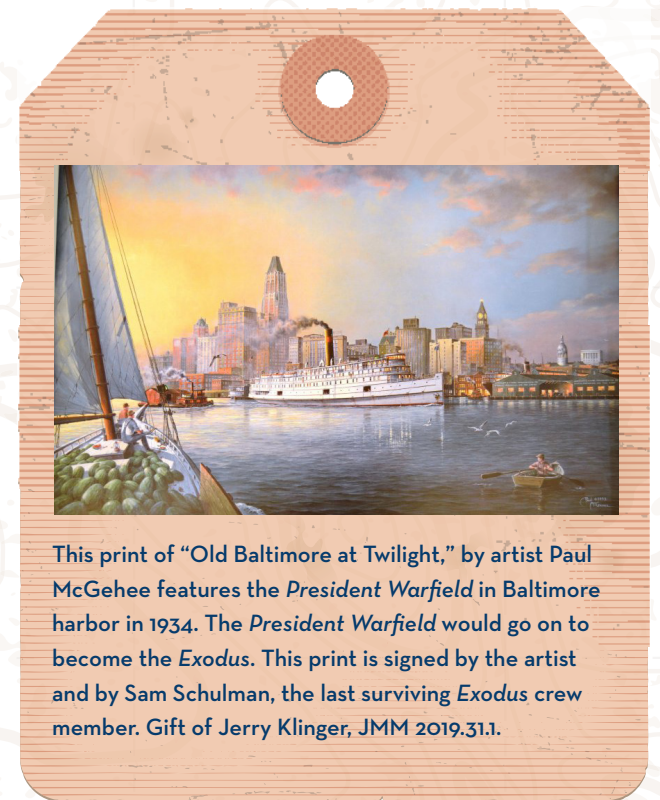
TO:
These religious children's books were well-loved by the Kauf family, accompanying them as they escaped from Germany to Shanghai, and eventually on to Baltimore where the family made a new life for themselves. Gift of Barbara Skarzynski, JMM 2019.21.



These handwritten postcards traveled from Antwerpen to Baltimore, keeping Fritz and Patsy Goldschmidt connected to their cousin Gerson Goldschmidt for over 60 years. Gift of the Estate of Fritz Goldschmidt, JMM 2019.27.69.



You can get anywhere you need to go - with the right shoes. This Mother Goose brand shoe box, c. 1950s is just part of a new donation to the collection about this Maryland-born business. A perfect complement to our *Fashion Statement* exhibit! Gift of Elisa Kessler Scherr and Suzanne H. Kessler for Irvin R. Kessler, JMM 2019.15.3.



This print of "Old Baltimore at Twilight," by artist Paul McGehee features the *President Warfield* in Baltimore harbor in 1934. The *President Warfield* would go on to become the *Exodus*. This print is signed by the artist and by Sam Schulman, the last surviving *Exodus* crew member. Gift of Jerry Klinger, JMM 2019.31.1.

TRAVELING COMPANIONS

Contributors 2018-2019

\$50,000+

The Associated: Jewish Community Federation of Baltimore
Bloomberg Philanthropies
Cohen Opportunity Fund
National Endowment for the Humanities

\$20,000 – 49,999

William G. Baker, Jr. Memorial Fund
The Herbert Bearman Foundation
Sandra and Thomas Hess in memory of Hugo Dalsheimer
Miriam Winder Kelly in memory of Patrick J. Kelly, Jr.
The Louis B., II and Josephine L. Kohn Family Foundation
The Joseph & Harvey Meyerhoff Family Charitable Funds
The Radisson Hotel, Baltimore Downtown, Inner Harbor
& The Crowne Plaza, Baltimore Downtown, Inner Harbor

\$10,000 – 19,999

Charles Crane Family Foundation
David B. Liebman Philanthropic Fund, Sue and Dr. David Liebman
Maryland State Arts Council
PNC Greater Maryland
Ronnie and Alli Russel Charitable Foundation

\$5,000 – 9,999

Lois Rosenfield Caring Fund of Baltimore Hebrew Congregation
Louis and Frances B. Booke Memorial Foundation
The Max and Nearyrath Cohen Family Fund
Saralynn and Sheldon Glass
Greif Family Fund
Hya P. Heine
Ann Horwitz and Bertha N. Oppel Charitable Trust
Dr. Robert and Mrs. Carol Keehn
Ronnie Kleiman
Nancy and Edward Kutler
Gerald and Judith Macks
Ira and Michelle Malis
Estate of Claire R. Manne
Israel & Mollie Myers Foundation, Inc.
Rothschild Charitable Foundation
Estate of Gilbert Sandler
The Carole Hanan Sibel Family Foundation
T. Rowe Price Foundation, Inc.
Duke and Phyllis Zimmerman
Margot B. Zipper in memory of Norman I. Zipper



It's not just JMM staff who "get around"! Part of what makes our summer internship special are the professional development opportunities we provide. In addition to a series of workshops led by staffers, interns participate in behind-the-scenes fieldtrips to other museums and cultural institutions in the area. Our 2018 interns had a chance to explore the Star-Spangled Banner Flag House, the Baltimore Museum of Industry, the Aquarium's new Animal Care and Rescue Center, and the Peale Center, along with a full day scavenger hunt through the various Smithsonian Museums in Washington, D.C.



With as many visitors as came through *Inescapable: The Life and Legacy of Harry Houdini*, there was a lot of wear and tear on the interactive portions of the exhibit. But no worries! Our trained staff came to the rescue, repairing and replacing parts as needed. Here we see Rachel helping put Jennie the Vanishing Elephant back together.

\$1,000 – 4,999

Baltimore National Heritage Area
Neil Bernstein
Dr. Erica S. Breslau
Larry and Debbie Caplan
Gary I. and Charlene M. Cohen Charitable Fund
Dr. and Mrs. Neri Cohen
Irvin and Barbara Donick
Sharon and Alan Dorenfeld
The Eliasberg Family Foundation, Inc.
Howard Fine
Nelson & Sara Fishman Family Foundation
Joseph Floam
Arnold and Joyce Fruman
Robert Gehman
Lowell and Harriet Glazer Family Philanthropic Fund
Toby Gordon and Bruce Kaup
Roberta and Ira Greenstein
Gift in Memory of Jim Guy
Lola and Joseph Hahn
Bonnie and Howard Henson
Bruce and Caren Hoffberger
Wendy Jachman and Jeffrey Scherr
The Kaplan-Kronsberg Family Charitable Fund
William and Mildred Kaplan Charitable Foundation
Joan G. and Joseph Klein, Jr. Foundation
Abram Kronsberg and Robin Kaplan
Kutler Family Philanthropic Fund
Suzanne Levin-Lapides
Melvin A. Lipsitz Family Foundation
Vivian and Robert Manekin
Judith Pachino
Ira and Leslie Papel
Nancy Patz Blaustein
Melanie and Marvin Pinkert
Ms. Mairi Quodomine
Lee and Judy Rosenberg
Nina and Stuart Rosenzwoog
Michael and Annette Saxon
Robyn and Edward Schaffer
Paul and Emily Singer Foundation
Robert and Jacqueline Smelkinson
John Sondheim and Emily Greenberg Fund
Ms. Harriet Stulman
Claire Tesh and Daniel Stoltze
Robin Wiener
David and Paulette Zee



We make sure our interns get real, hands-on experience in the museum field during their time with us. Whether it's recording their own podcast episodes, creating small lobby exhibits, or repairing archaeological finds in the collections (as seen here), you'll find JMM interns learning through direct experience.



Our annual Summer Teachers Institute (STI), a 3-day program for educators from across Maryland to learn about teaching the Holocaust, is a foundational program here at JMM. One important aspect of STI is that each day takes place at a different venue, letting us incorporate a variety of resources, speakers, and perspectives every year. In 2018 our participants spent a day each at JMM, the United States Holocaust Memorial Museum in Washington, DC (pictured here), and the Baltimore Hebrew Institute at Towson University.

\$500 - 999

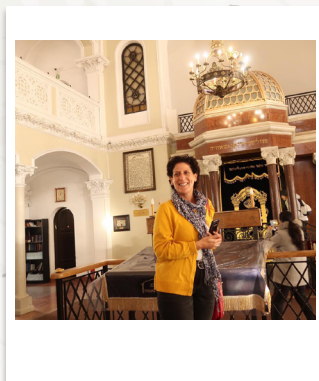
Aimee and Steven Adashek
Leonard and Phyllis Attman
Stan and Donna Ber Charitable Trust
Rabbi Seth Bernstein
Caplan Family Foundation
Faith Dean
Avi Decter
Arthur and Isadora Dellheim Foundation
Andrew and Pam Dorfmann
Mindie Flamholz
James and Carolyn Frenkil Charitable Foundation
Marvin Glyder
Louise Goldberg
Jay and Ann Goldscher
Historic Jonestown, Inc.
Betsey R. Kahn
Murray and Michele Kalish
Michael and Cherie Kurtz
Robert and Vivian Manekin Philanthropic Fund
Marsha and Richard Manekin Philanthropic Fund
Margaret Nomentana Foundation
Dr. Lawrence Pakula
Ellen Patz
Howard and Anne Perlow
Morton B. Sonny "Plant Memorial Fund"
J. Mark and Lorraine Schapiro
Brian Shine
Hon. Rochelle "Rikki" Spector and Oscar Brilliant
Dr. Stuart H. and Eleanor H. Yuspa Charitable Fund
Barbara Zelnik

JMM Jet Setting

Working to make 15 Lloyd Street a destination can lead JMM Staff far afield. From presentations to conferences, research trips to testimony before lawmakers, field trip visits at other museums to chauffeuring artifacts, the past year has seen the Museum's managers all over the city, the state, the country, and the world! Below are just a selection of the 25+ experiences they had outside the walls of JMM.



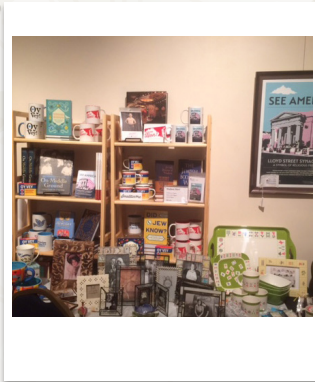
Marvin, Tracie, and Tracey headed to Washington, DC to talk scrap with the Institute of Scrap Recycling Industries this winter, as everyone gets excited for the October opening of *Scrap Yard: Innovators of Recycling*.



Ilene traveled to Poland courtesy of the Polish Embassy with a group of Jewish leaders, meeting with professionals around the country working on sharing Poland's Jewish history with its citizens.



Joanna presented to Hinenu: Baltimore Justice Shtiebel at the Homewood Friends Meeting house, showing off a variety of Torah mantles and binders from our collections to help inspire the creation of Hinenu's own new mantle.

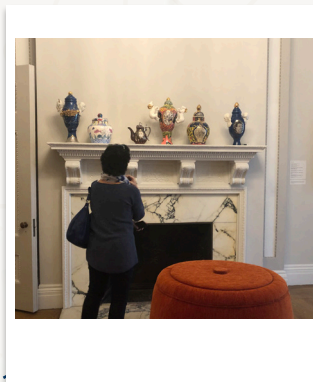
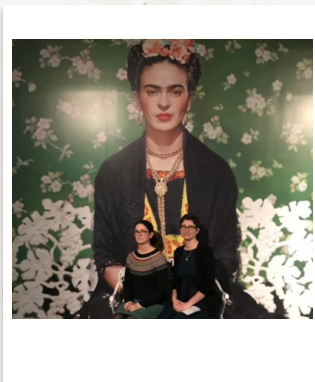


Esther's Place, the JMM shop, went on the road to Strathmore's annual "Holiday Shop Around," joining a dozen other museum gift shops in the historic mansion.

In addition to presentations at multiple museums and history conferences, Marvin branched out by playing moderator at Baltimore Center Stage for a panel on Jewish theater.



While in New York for the Building Museums Conference, Tracie and Joanna got a chance to see the Brooklyn Museum's *Frida Kahlo: Appearances Can Be Deceiving* exhibit.



The entire management team got a special tour of the Walters Art Museum's new 1 Mt. Vernon Place installation, focusing on the decision-making behind the exhibits.

Endowments

L. and S. Bendann Documentation Endowment
Louis and Henrietta Blaustein Museum Endowment
Louis and Frances B. Booke Research Endowment
Checket Family Website Endowment
Florence Cohen Beautification Endowment
Collections Conservation Fund
Doris and Benjamin Fishman Education Endowment
Isaac and Catharine Hecht Acquisition Endowment
Hoffberger Family Exhibition Endowment
Israelson Newsletter Endowment
Betsey and Philip Kahn Publications Endowment
Katz Family Library and Research Endowment
Zanvyl and Isabelle Krieger Museum Endowment
Anita and Mickey Steinberg Internship Endowment
Edith Rothschild Weinberg Family Museum Endowment
Harry and Jeanette Weinberg Foundation
Jewish Museum Fund
Robert L. Weinberg Family History Endowment
Ellen Kahan Zager Accession Endowment

Associated Endowments for the Benefit of JMM

Joseph and Minna Feldman Lecture Endowment
(Sadie B. Feldman and Rosetta A. G. Glashofer)
Sheldon & Saralynn Glass Education Endowment Fund
Sigmund Stanley Hartz Endowment Fund
Benedict and Babette Rosenberg Endowment Fund

1845 Society Members

Leonard and Phyllis Attman
Barbara Cohen
Richard and Rosalee Davison
George and Ricki Henschel
Thomas and Sandra Hess
Betsey Kahn
Mark and Robin Neumann
Dr. Lawrence Pakula
Stuart and Nancy Rombro

Lloyd Street League Members

Phyllis Blum
Dr. and Mrs. Stanley Friedler
Sheldon and Shelley Goldseker
Benjamin Greenwald
Michael and Barbara Hettleman
Elizabeth K. Moser
Robert and Irene Russel
Gordon Salganik
Gail Stern
Ronald and Arlene Weitzman
Melvin and Barbara Zelnik

CREW

Collections & Exhibits

Fran Banks
Martin Buckman
Lou Church
Margaret Church
Lola Hahn
Joyce Jandorf
Marcia Kargon
Vera Kestenber
Laurie Margolies
Sylvia Nudler
Nancy Rombro
Marvin Spector
Judith Tapiero

Docents

Dr. Michael Andorsky
Robbin Bord
Bob Brooks
Ted Cornblatt
Dr. Howard Davidov
Wendy Davis
Lois Fekete
Helene Goldberg
Robyn Hughes
Joyce Jandorf
Harvey Karch
Nancy Kutler
Dr. Bruce Lebowitz
Lawrence Levin
Sarah Levitas
Rita Plaut
Bev Rosen
Karen Rubin
Steven Rubin
Phil Sagal
David C. Sher
Helene Waranch
Ray Weinstein

My Family Story

Jaime Banks
Robert Davis
Wendy Davis
Simone Ellin
Saralynn Glass
Dr. Robert Keehn
Nancy Kutler
Duke Zimmerman

Museum Shop

Carol Buckman
Maxine A. Cohen
Jacob Davenport
Laraine Fisher
Stephany Gilbert
Jonas Goldstein
Maxine Gordon
Rachel Jablon
Robin Kaplan
Karen Terner
Seth Taylor

Reception/Front Desk

Jacob Davenport
Maxine Gordon
Roberta Greenstein
Betsey Kahn
Shelly Mintz
Rena Rotenberg
Ellen Stein
Harold Toppall

Special Events

Roberta Greenstein
Robin Kaplan
Abram (Abe) Kronsberg
Ellen Stein

Interns

Cara Bennet
Alexia M. Orengo Green
Ellie Smith
Marisa Shultz
Ash Turner

Committees

Nancy Bloom
Larry Boltansky
Edie Creeger
Alice Donahue
Rochelle Eisenberg
Simone Ellin
Michelle Gordon
Andrew Harrison
Anita Kassof
Lisa Lipsky
Nora Lockshin
Emily Rafferty
Larry Rosenberg
Mike Saxon
Mark Smolarz
John Sondheim
Peggy Wolf
Harvey Zeiger

Consultants

Alchemy Studios
Ashton Design
Dellon Design
Scott Findlay
Jonathan Scott Fuqua
Gallagher & Associates
Barry Kessler
Will Kirk
Randi Korn & Associates
Zachary Paul Levine
David London
Steven Marker
Daniel Matsumoto
Danielle Nekimken
P&M Exhibits
Sanket Patel
Stevenson University
Amelia Voos
Ziger / Snead LLP

JMM BOARD AND STAFF

Officers

Robert Keehn
President

Nancy Kutler
Senior Vice President

Jeffrey Scherr
Vice President

Len Weinberg
Vice President

Gerald (Jerry) Macks
Treasurer

Arnold Fruman
Secretary

Duke Zimmerman
Immediate Past President

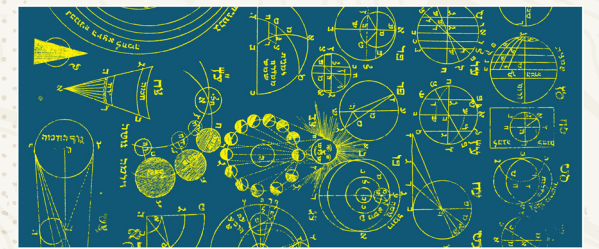
Trustees

Sheldon Bearman, M.D.
Erica Breslau
Neri Cohen, M.D.
Alan Dorenfeld
Robert Gehman
Saralynn Glass
Toby Gordon
Roberta Greenstein
Lola Hahn
Steven Hawtof
Bonnie Henson
Anita Kassof
Iris Krasnow
Abram Kronsberg
Suzanne Levin-Lapides
Ira Malis
Robert Manekin
Judy Pachino
Lee Rosenberg
Stuart Rosenzwo
Rochelle "Rikki" Spector
Claire Tesh
Angela Wells-Sims

Past Presidents

Ira Askin*
Miriam Lowenberg Black
Louis F. Cahn*
Larry Caplan, Esquire
Moses J. Cohen*
Rabbi Israel M. Goldman*
E.B. Hirsh*
Barbara Katz
Judith M. Langenthal
Richard S. Lehmann, Esquire
Jack Levin*
David B. Liebman, D.P.A.
Ira Papel, M.D.
Mark D. Neumann
Morton S. Oppenheimer*
James A. Rothschild, Esquire
Edward B. Sandler*
Brig. Gen. Philip Sherman*
Samuel S. Strouse*
Joseph Wiesenfeld*
Duke Zimmerman

*deceased



JEWES IN SPACE: Members of the Tribe in Orbit May 24 - December 31, 2020

Jews In Space: Members of the Tribe in Orbit was a year and a half in the making and debuted at the Center for Jewish History in New York in partnership with the YIVO Institute for Jewish Research. We are moonstruck to bring this unusual and entertaining exhibit to JMM.

Walk through the exhibit hall and you'll find items as rare as 18th- and 19th-century rabbinic tomes on astronomy in Hebrew, German, and Yiddish, and items as idiosyncratic as Yiddish science fiction and Mr. Spock memorabilia.

You'll see the dreidel, Torah pointer, traveling menorah, and other religious artifacts (including a tallit with weights in the ends so it would stay on in zero gravity!) that Jewish American astronaut Jeffrey Hoffman carried with him into orbit. Also on display are mementos from other Jewish space travelers and a detailed timeline of Jewish accomplishments in astronomy and spaceflight.

With the title a reference to Mel Brooks, visitors can expect a playful treatment of the subject matter, paired with a substantive review of fascinating and nuanced topics. Curators interpret rare rabbinical surveys of the cosmos, biographies of Jewish astronauts, and modern and contemporary science fiction. Fans of astronomy, astronauts, space science, or science fiction all will find the exhibit enlightening and entertaining.

As a part of our mission to connect Jewish Maryland to its roots and the rest of Baltimore—resident and visitor alike—to the Jewish experience, JMM is creating "Marylanders Feel the Wonder of Space" as a companion to *Jews in Space*.

As a history museum, we do our job best when we teach history by connecting people to people. By interviewing contemporary Baltimore- and Maryland-based space scientists (Jewish and non-Jewish) about their paths to their current positions, we will highlight scientists' early moments of wonder and curiosity, and feature objects that represent those stories. By telling these stories of wonder—and where they led, we hope you'll recognize some of your own path-changing moments, from the past and present.

JMM Staff

Marvin Pinkert
Executive Director

Tracie Guy-Decker
Deputy Director

Trillion Attwood
Program Manager and Curatorial Assistant

Joanna Church
Director of Collections and Exhibits

Ilene Dackman-Alon
Director of Learning and Visitor Experience

Wendy Davis
Volunteer Coordinator

Tracey E. Dorfmann
Director of Development

Sue Foard
Membership and Volunteer Coordinator

Rachel Kassman
Development and Marketing Manager

Jessica Konigsberg
Office Manager and Shop Assistant

Talia Makowsky
Visitor Services Coordinator

Jeannette Parmagiani
Director of Holocaust Programs

Lorie Rombro
Archivist

Paige Woodhouse
School Program Coordinator

Museum Educators:

Alex Malishostak
Marisa Shultz

Upstanders!

FROM THE COLLECTION



Upstanders are the opposite of bystanders; they see something they can improve and take action to address it.

Here at JMM we've made a commitment to inspiring action - we want our visitors (and ourselves) to become **Upstanders** in our communities. This year we implemented a variety of campaigns and projects to support this goal:

- We created a set of custom products for Esther's Place, including postcards celebrating upstanders in our collections. The Baltimore Jewish community has been deeply engaged in civic and charitable endeavors. In our collections we discovered upstanders from many walks of life **taking action through civic participation, community organizing, simple acts of kindness, and excellence in helping professions.**
- This fall, JMM joined with the Baltimore Jewish Council, the JCC, the Associated, and a variety of community partners to spearhead a voting pledge campaign. **We believe that upstanders vote and created a voter pledge card** that visitors filled out, promising to show up on election day. We then mailed their postcards to remind them of their pledge. We look forward to continuing this campaign through the years to come.
- In April, JMM again hosted *Together We Remember*, commemorating and honoring those lost to violence. This year the program expanded to include calls to action aimed at **uniting Baltimoreans across lines of difference to address rising hatred and ongoing violence.** Participants were asked to commit to act, sparking a movement to fulfill the promise of "Never Again."
- This summer we introduced a new campaign in partnership with the Jewish Volunteer Connection, **tying our exhibits and programs in with volunteer opportunities.** For example, *Fashion Statement* led us to Sharp Dressed Man, which fits men preparing for work with recycled suits-providing clothing and confidence to help secure successful job interviews, and the Ulman Foundation, which provides winter hats to young adults impacted by cancer. Visitors inspired by our exhibits will leave JMM with a list of actions they can take right away.



We can't wait to find, create, and share more opportunities for Upstanders at the JMM in the coming year!

GET ON BOARD

Like most cultural organizations the Jewish Museum of Maryland relies on the generosity of our members, friends, and the larger community to support our programs, activities, and operations. We need your help to grow and sustain our calendar of exhibits, public programs, educational resources and community projects. Contributions are welcome at any level.

BECOME A MEMBER

Membership is a wonderful way to become involved with and support JMM. Join our community of members today.

VOLUNTEER

We rely on our dedicated team of enthusiastic, outgoing and hard-working volunteers to support the Museum mission and programming.

ANNUAL GIVING

Annual contributions are vital to sustain our mission of interpreting the American Jewish experience for diverse audiences, fostering cross-cultural understanding, and promoting public discourse about issues in Jewish and American life. Tribute donations are a wonderful way to remember special occasions and events, celebrate a birthday, or honor someone's memory.

CORPORATE GIVING

Corporate sponsors and patrons receive broad recognition and benefits for employees and their families.

CREATE A LEGACY

Remember the JMM in your estate plans through a direct bequest or another planned financial vehicle arranged during your lifetime.

CONTRIBUTE TODAY!

For more information about how to make a one-time donation, recurring gift, or a planned future gift contact Tracey Dorfmann 443.873.5165 or tdorfmann@jewishmuseummd.org

CONTACT US

Phone: 410.732.6400
Email: info@jewishmuseummd.org
Donate: donate@jewishmuseummd.org

jewishmuseummd.org



Coming downtown to do good? That's what our intergenerational participants decide to do on December 25th each year for Mitzvah Day. This year's Mitzvah Day project involved putting together backpacks full of school supplies for immigrant students, in partnership with the Esperanza Center. It's a great way to give back while spending time with the family, as you can see here with JMM Trustee Lola Hahn and her beaming grandkids.



Jewish Museum

OF MARYLAND
Herbert Bearman Campus

Non-Profit Org.
U.S. Postage
PAID
Baltimore, MD
Permit #8472

15 Lloyd Street | Baltimore, MD 21202
jewishmuseummd.org | 410-732-6400

Cover: Steamer trunk used by 3 generations of
Hechts: Isaac, his son Lee, and grandson Isaac.
Gift of Eleanor Hecht Yuspa, JMM 2012.115.1.

JewishMuseumMd.org



facebook.com/jewishmuseummd @jewishmuseummd @jmm_md



AN AGENCY OF
The Associated
Inspiring Jewish Community